

BEST BUY

REMODEL



BACKGROUND

For a prominent retail chain, the look and feel of showroom space is essential in maintaining the integrity of the brand. For global electronics retailer, Best Buy, consumers have come to recognize and expect an interactive shopping experience. When Best Buy executes a store upgrade project, they require a high level of precision and attention to detail. This store remodeling project was no exception and included removing interior walls, repaving the parking lot, new office space construction, electrical and plumbing rerouting work, and custom-built components.

AMERICA'S #1 CONSUMER ELECTRONICS RETAILER HAS HIGH STANDARDS. THE BEAM TEAM BRINGS EFFICIENCY AND PRECISION TO EACH ROLLOUT.

THE OPPORTUNITY

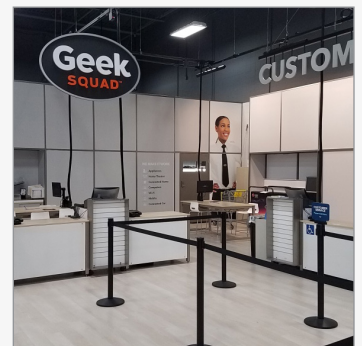
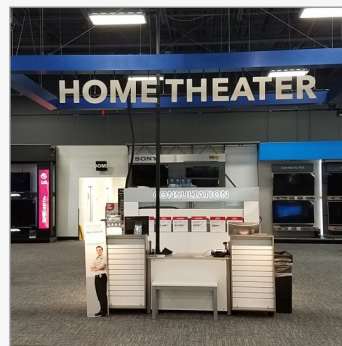
With dozens of moving parts, the remodeling project came with a host of ongoing challenges. During installation, it was found that the flooring installation contractor was not performing as expected. In addition, delays in the arrival of fixtures threatened to derail the construction schedule and postpone the project completion beyond the desired 11 weeks.

THE SOLUTION

Additional flooring contractors were brought in to ensure the level of craftsmanship was up to The Beam Team's work

standards. An on-site flooring supervisor was assigned to review all work completed as well as oversee the entire flooring operation. The Beam Team worked directly with Best Buy's project teams to receive updated delivery information and adjusted critical paths to accommodate for all anticipated delays. Open lines of communication were maintained with key stakeholders and daily check-in meetings were scheduled to review tasks as well as address any concerns.

All perimeter racking was carefully removed, and The Beam Team's construction and installation specialists re-installed new gondolas, vendor pad fixtures, front-of-house fixtures, and perimeter racking. Custom fixtures were also built to specs and expertly-installed.



As the #1 electronics retailer, Best Buy requires precision and on-time performance. The Beam Team delivered all aspects including HVAC, electric and plumbing.